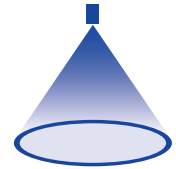


# ➤ Tangential-flow hollow cone nozzles, stainless steel/brass version Series 302

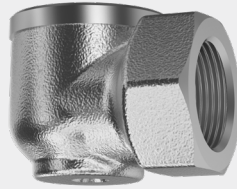


### Features:

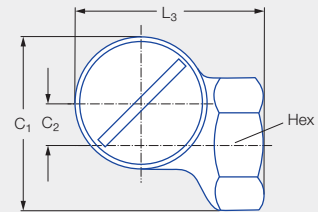
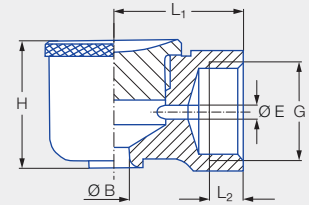
- Uniform atomization
- Non-clogging nozzle without swirl insert

### Applications:

- Humidification of air
- Dust control
- Sprinkling
- Foam control
- Adiabatic cooling



Series 302



G	Dimensions [mm]							Weight [g] (Brass)
	C <sub>1</sub>	C <sub>2</sub>	H	L <sub>1</sub>	L <sub>2</sub>	L <sub>3</sub>	Hex	
3/8 BSPP	34.0	8.0	23.0	23.0	6.5	36.0	22	90.0

Spray angle	Ordering no.		Bore diameter B [mm]	Narrowest free cross section Ø [mm]	V̇ water [l/min]								Spray diameter D [mm] (at p = 2 bar)		
	Type	Mat. no.			p [bar]								 H = 250 [mm]    H = 500 [mm]		
		1Y			30	0.5	1.0	2.0	3.0	5.0	7.0	10.0			
60°	302.364	•	•	1.50	1.50	0.32	0.45	<b>0.63</b>	0.77	1.00	1.18	1.41	280	420	
	302.464	•	•	2.00	2.00	0.70	0.99	<b>1.40</b>	1.71	2.21	2.62	3.13	280	460	
80°	302.545	•	•	4.90	2.30	1.12	1.58	<b>2.24</b>	2.74	3.54	4.19	5.01	360	660	
90°	302.606	•	•	4.60	4.00	1.58	2.23	<b>3.15</b>	3.86	4.98	5.89	7.04	470	810	
130°	302.368	•	•	3.00	1.00	0.32	0.45	<b>0.63</b>	0.77	1.00	1.18	1.41	660	1,080	
	302.468	•	•	5.00	1.70	0.70	0.99	<b>1.40</b>	1.71	2.21	2.62	3.13	810	1,370	
	302.548	•	•	5.00	2.50	1.12	1.58	<b>2.24</b>	2.74	3.54	4.19	5.01	960	1,640	
	302.608	•	•	5.00	3.50	1.58	2.23	<b>3.15</b>	3.86	4.98	5.89	7.04	1,060	1,800	
	302.668	•	•	7.50	3.60	2.25	3.18	<b>4.50</b>	5.51	7.12	8.42	10.06	1,120	1,950	
	302.748	•	•	7.50	4.80	3.55	5.02	<b>7.10</b>	8.70	11.23	13.28	15.88	1,160	2,150	

Conversion formula for this series:  $\dot{V}_2 = \dot{V}_1 \cdot \sqrt{\frac{p_2}{p_1}}$

Ordering Type + Material no. = Ordering no.  
example: 302.364 + 30 = 302.364.30

Assembly accessories can be found in Chapter 9 "Accessories".